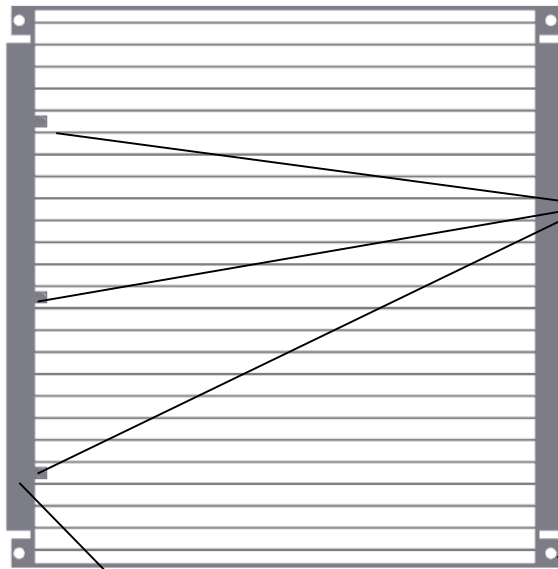


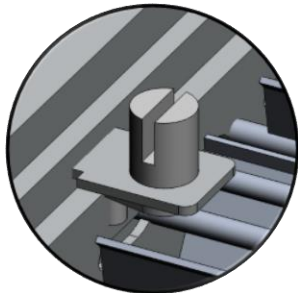
Rack Front Edge



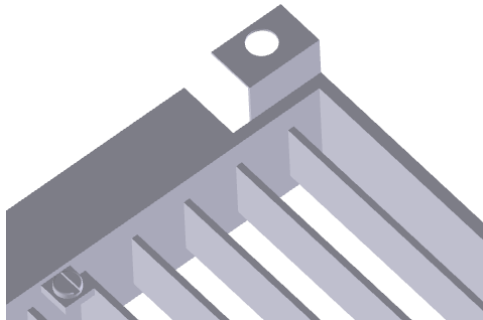
100% variable setting of each damper zone allows for more accurate airflow control to each vertical segment of the rack, while allowing for nearly true 100% airflow

Side flow baffle reduces airflow when set to 0%

Free hanging design allows for easy retrofit or removal of damper



Quarter-turn damper adjuster accessible through airflow panel



Support Tabs allow for suspension from pedestal head for panel independent mounting, optional screw down mounting

## SPECIFICATIONS

### General Information

- Adjustable from top without removing raised floor panel
- Quarter turn adjustment for 0-100% range of damper
- Drop in fit onto Tate 2' or 4' Steel Bolted Stringer System
- Designed for use with DirectAire®
- Made from anodized extruded aluminum
- Damper Weight: 3.8 lbs. (1.7 kg)
- Clear Anodized Aluminum Finish

## AIRFLOW PANEL OPTIONS

- DirectAire (24" and 60cm versions)

Opposed Blade Damper w/24" DirectAire Panel

Static Pressure	100% Open	50% Open	0% Open
0.02	986	584	143
0.04	1427	824	207
0.05	1636	915	234
0.06	1789	1000	242
0.08	2056	1171	289
0.10	2331	1296	326
0.12	2508	1442	358
0.14	2809	1541	397
0.16	2998	1672	417
0.18	3152	1725	453
0.20	3339	1838	466