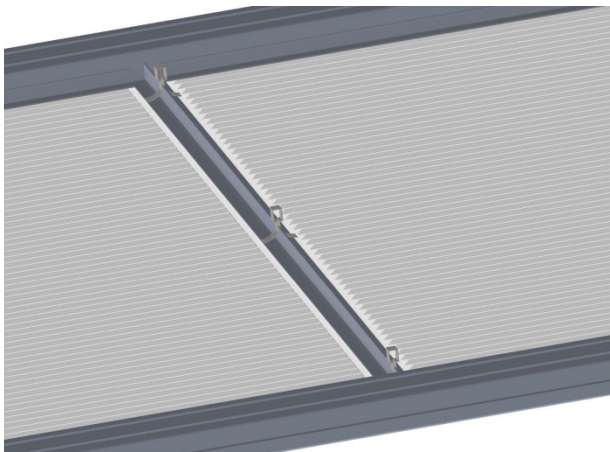
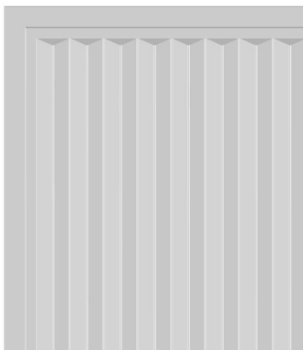


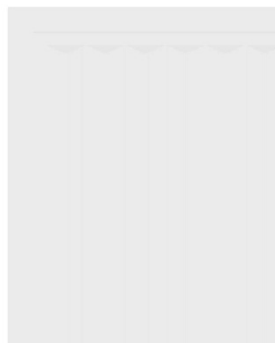
Sturdy aluminum construction with replaceable PVC tiles



Uplift prevention clips keep tiles in place, and allow for easy maintenance



Translucent Tile



Transparent Tile

SPECIFICATIONS

General Information

- Pre-assembled sections allow for a simple and quick installation
- Hard roof tiles allow for use under wet sprinkler systems (check with local fire marshal)
- Tiles are class A fire rated, tested per ASTM E84
- Tiles are UL Listed- File R4036, and FM Approved-Class 4651
- Solid aluminum frame construction
- Supports aisle widths of 4' to 6'
- Modular design allows for any aisle length
- Fully supported by racks to leave aisle clear

Weight

- 45 lbs. – for a 4'x6' (nominal) section

Dimensions

- 75.125" length x 54.16" width x 1.57" height
 - Due to the nominal 4'x6' size, a custom sized hard partition may need to be ordered to create a proper seal. Talk to your Inside Sales rep for more information
- Custom sizes available

OPTIONS

Hard Roof Tile Options

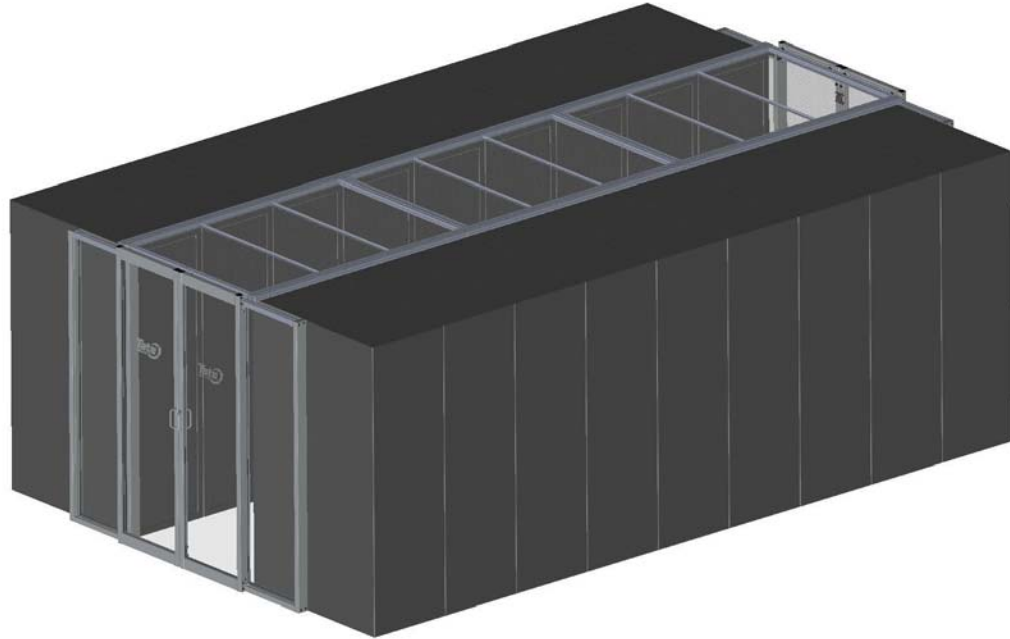
- Clear
- Translucent

Aluminum Extrusion Finish Options

- Clear Anodized
- Black Anodized

INCLUDED COMPONENTS

- ContainAire® Hard Roof Frame
- 3 Hard Roof Tiles per Frame Section
- Rack mounting hardware
- Uplift prevention clips



Cold Aisle Example with ContainAire Hard Roof with Transparent Tiles, and Dual Doors

PART NUMBERS

